

RELIANCE INSIGHTS

April 2016 Newsletter

IN THIS ISSUE

- ⚙️ New Hyperperformance Pistons for John Deere
- ⚙️ Brand New Hydraulic Pumps for John Deere
- ⚙️ Enhanced Remanufactured Clutch Assemblies
- ⚙️ Oil Pumps & Coolers - Is Your Engine Healthy?
- ⚙️ Reliance Tradeshow Participation

We Keep Great Equipment Working Great!



Hyperperformance Pistons for John Deere

MAXIMUM PERFORMANCE & DURABILITY FOR 6076 & 6081 APPLICATIONS

We are proud to introduce two new piston options for John Deere 6076 and 6081 engines. Featuring a hard anodized crown and phosphate coated skirts, Hyperperformance pistons fit the same machine applications as our current 6076 & 6081 engine offerings, and are dimensionally equivalent to our current high ring NRE60294 & high compression NRE64509 cylinder kits. New Hyperperformance cylinder kit part number RP1288 fits the 6076, and RP1289 fits the 6081.



HARD ANODIZED CROWN

Hard Anodizing strengthens the surface of the piston crown, offering additional protection against corrosion & wear. It also creates a thermal barrier for the piston, reducing fatigue by keeping temperatures lower.

PHOSPHATE COATED SKIRT

Phosphate Coating the piston skirt increases hardness & wear resistance, and provides a lubricant film which is especially beneficial during start-up or break-in of engines to protect against galling & micro-welding.

These additional pistons continue our promise to deliver high quality parts and give you even more choice!

INDIANA
(800) 342-2545

IOWA
(800) 377-1297

NEBRASKA
(800) 467-5545

NEVADA
(800) 776-3113

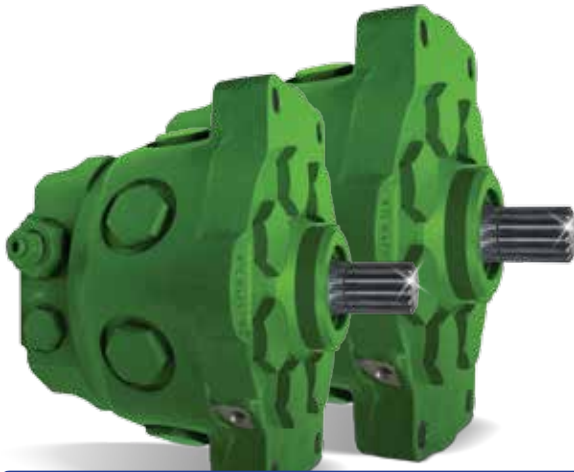
CALL CENTER HOURS: 8:00 am - 8:00 pm EST





Hydraulic Pumps for John Deere

BRAND NEW WITH A ONE YEAR PARTS & LABOR WARRANTY!



We now stock two **all-new** hydraulic pumps for John Deere Row Crop and 4WD tractors. These radial piston pumps are brand new, and carry a 1-year parts and labor warranty. These popular pumps are used in nearly all Waterloo tractors produced from 1961 until the early 1990's.

- ✓ Equivalent OEM pump AR94660 and AR94661
- ✓ 100% brand new hydraulic pumps
- ✓ Higher precision & quieter operation than rebuilt units
- ✓ Every pump is tested for pressure and functionality
- ✓ 1-year parts and labor warranty
- ✓ In stock, giving you off-the-shelf availability
- ✓ Two part numbers cover over 85 applications

RELIANCE PUMP #	EQUIVALENT OEM PUMP #	SIZE	INLET PORTS	OUTLET PORT
NAR94660	AR94660, AR101807 (with supplied right inlet port fitting)	3.0 Cu. In (50cm ³)	2 x 1-1/16"	1-1/16" (if outlet port on old pump is 7/8" O-ring thread, a fitting is required)
NAR94661	AR94661, AR99839, AR73106, AR70722, AR46246	4.0 Cu. In (65cm ³)	2 x 1-1/16"	1-1/16"

11" Clutch Assemblies for John Deere 5000 Series

MULTIPLE UPGRADES FOR THE ULTIMATE IN DURABILITY

We carry remanufactured clutch assemblies for John Deere Utility Tractors. These units are rebuilt to exacting standards, and feature several design and material upgrades to offer higher quality, increased reliability, and longer service life.

KEY FEATURES

- ✓ High-quality Belleville springs, designed to meet or exceed OEM standards
- ✓ Redesigned heavy-duty driven discs to withstand more heat & abuse
- ✓ Superior quality clutch buttons provide increased service life



RELIANCE PART #	DESCRIPTION	TRANSMISSION TYPE	APPLICATIONS
HTRE66695R	11" Clutch assembly: Includes Transmission and PTO discs	TSS and Collar Shift	5200, 5300, 5400, 5400N, 5500, 5600, 5700
		TSS Syncshuttle and Collar Shift (Early)	5210, 5310, 5310N, 5410, 5510, 5510N
		TSS Syncshuttle and Collar Shift	5415, 5615, 5715
HTRE67588R	11" Clutch assembly: Includes woven PTO disc	Hydraulic Reverser	5200, 5300, 5400, 5500
		Power Reverser (Early)	5210, 5310, 540, 5510
HTRE211277R	11" Clutch assembly: Includes 6-pad Trans disc, 4-pad PTO disc	TSS Syncshuttle and Collar Shift (Late)	5210, 5310, 5310N, 5410, 5510, 5510N
		TSS Syncshuttle and Collar Shift	5220, 5320, 5415, 5420, 5520, 5615, 5715
HTRE211279R-SET	11" Clutch assembly: Includes Transmission and PTO discs	SyncReverser	5105, 5205



Oil Pumps & Coolers

CLEAN OIL EQUALS A CLEAN & HEALTHY ENGINE

The lubrication system plays a vital role in maintaining peak performance in engines. To assure full engine life on newly rebuilt engines, cleanliness is key. Our new oil pumps and coolers offer significant savings, and are in stock and ready to ship. You can be assured of fit and quality, as we control the manufacturing process on these pumps and coolers.

MANUFACTURER	Cummins	Ford Tractor	International	John Deere	NEF / FPT	Perkins
OIL PUMP APPLICATIONS	6B5.9, 6C8.3, ISB 4, ISB6	175, 192, 201, 233, 256, 268	D312, D360, D414, D436, DT436, DT466	152, 164, 179, 202, 219, 239, 276, 303, 329, 359, 414, 3029, 4039, 4045, 6059, 6068; Powertech 4045 and 6068; 6466, 6076, 6081, 6619, 6101	4.5L, 6.7L	3.152, 4.236, 4.248, 6.354, 903.27, 1004.4, 1006.6; Caterpillar 3054, 3056
OIL COOLER APPLICATIONS	4B3.9			164, 179, 219, 239, 329, 359, 3029, 4039, 6059, 6404, 6466, 6076, 6081, 2.9 Powertech	4.5L, 6.7L	

During our inspections of failed parts from warranty claims, we frequently find that contaminated lube oil was the primary cause of failure. When an engine suffers an internal failure, the oil cooler can act as a trash can; collecting debris from the damaged components. This debris can clog the cooler, and will eventually circulate throughout the lubrication system. In order to avoid premature failure after rebuilding a damaged engine, we recommend replacing the oil cooler. Remember - clean environment, clean parts, clean oil - means a **clean & healthy engine!**



Tradeshows

TALK TO AN ENGINE EXPERT FACE-TO-FACE!

Industry tradeshows offer you the chance to talk with one of our engine specialists. We showcase the newest additions to our product lines as well as new products in the pipeline. These shows also demonstrate our commitment and support to industry organizations. Recent shows we've attended include:

FEB 2016 NATIONAL FARM MACHINERY SHOW
Louisville, KY, USA

FEB 2016 CNH PARTS & SERVICE EXPO
Nashville, TN, USA

JAN 2016 NTPDA
Kansas City, MO, USA

NOV 2015 EXPOTRANSPORTE ANPACT
Guadalajara, Mexico

NOV 2015 AGRITECHNICA
Hannover, Germany



The Reliance Insights newsletter is your source for product announcements, events, technical information, and much more. Take a look inside and see what's new!



We make every effort to ship from our closest location to reduce shipping time and charges.

Warehouses located in: Minden - NV, Lincoln - NE, Harlan - IA, Lynn - IN, Jacksonville - FL, and Winnipeg - MB (Canada)

New Hyperperformance Pistons!

PLUS PUMPS, CLUTCHES, AND MORE!



We have some exciting products lined up in this month's Reliance Insights newsletter! Newly developed piston options, hydraulic & oil pumps, upgraded remanufactured clutch assemblies, and more. Take a look inside to see all that's new!

www.reliancepowerparts.com

NEVADA
(800) 776-3113

IOWA
(800) 377-1297

NEBRASKA
(800) 467-5545

INDIANA
(800) 342-2545

PO Box 408, Lynn, Indiana 47355-0408

RELIANCE
POWER PARTS

